

Natural gas pipeline safety and emergency information

> Important safety information enclosed.



Alliance Pipeline -
an Enbridge Company
Public Awareness
Program, 2020



Public Awareness Program
200, 425-1st Street S.W.
Calgary, AB T2P 3L8

24-hour Alliance emergency number:
1-800-884-8811

All pipeline markers provide the name of the pipeline operator, product being transported and a telephone number for reporting pipeline emergencies.



**Click
Before
You Dig.com**

Pipeline safety

You are receiving this brochure because we have identified you as a public official or community leader near Alliance's natural gas pipeline or related facilities.

This brochure has been created to provide basic pipeline safety information regarding:

- The presence of the pipeline in or near your community.
- One-call centre information, including how to have underground utilities marked.
- How to prevent pipeline incidents.
- Pipeline safety considerations around land use planning.
- How to recognize the signs of a leak.
- How to respond in the unlikely event of an emergency.
- How to contact us in an emergency or to obtain additional information.

In case of emergency:

Our pipeline is monitored 24-7. If you suspect a pipeline emergency, please find a safe place to call 911 and then call Alliance's toll-free emergency number.

24-hour emergency number

1-800-884-8811

How you can reach us (non-emergencies only):

Phone
1-877-640-8665
(Public Awareness hotline)

Email
CdnPublicAwareness@enbridge.com

Mail
Public Awareness Program
200, 425-1st Street S.W.
Calgary, AB T2P 3L8

Website
enbridge.com/publicawareness



Please read and share the information in this brochure with others in your organization.

Alliance Pipeline is a joint venture partnership owned by Enbridge Inc. and Pembina Pipeline Corporation.

In 2018, the Joint Venture announced a new operating and administrative model for Alliance Pipeline that would see Enbridge managing operations for the system. As a result within this brochure you will see contact information that connects you with Enbridge employees.

Pipeline safety: A shared responsibility

Under the Canadian Energy Regulator Act (CER Act), the responsibility to prevent pipeline damage is shared between the pipeline company and anyone who plans to conduct an activity near a pipeline.

As the owner and operator of thousands of kilometres of pipe transporting high-energy natural gas, our highest priority is operating our assets safely and reliably to protect the people, communities and environment located nearby.

While our pipeline is buried out of sight in the right-of-way (ROW), we never lose sight of the bigger picture: of our potential impact on the air, water and land around us, and our responsibility to preserve all elements of our environment.

In fact, our activities – everything from pipeline design, construction, testing, maintenance, operation and safety practices – are subject to government regulations, which we meet or exceed.

If we disturb the ground, we strive to restore the land to its original condition and to protect the quality of the air and water that sustains us.

Whether it's wildlife, soil, freshwater or historical artifacts, in every aspect of our business we work hard to preserve the natural balance of the land.

We encourage you to read and share the information contained in this brochure, then keep it for future reference.



To do that, we carefully plan, from start to finish on any project, making sure our people know what's expected and implementing programs that will help to protect the environment.

Being responsible for pipeline safety, however, does not mean we are in it alone.

Engaging with communities is important to us. That's why we regularly communicate important safety information to utilities, contractors, local governments, emergency services, landowners, tenants, regulators and neighbours.

As a public official or community leader, you also have an important role to play. Your knowledge of pipeline(s) in your community, and your commitment to safe land use planning, permitting and development also help to reduce the risk of pipeline damage, helping to safeguard the communities living and working near our assets.

The safety of our communities is an important part of Alliance's safety management system. We continue to promote our good working relationship with public officials, community leaders, permit applicants and developers through meetings, personal contact and brochures, such as this one.

A right-of-way (ROW) is a strip of land of varying widths that may contain one or more pipelines.

The ROW & pipeline markers

While the depth and locations of the pipeline can vary within the ROW, the ROW:

- Identifies an area that restricts certain activities to protect public safety.
- Provides Alliance employees and contractors access to the pipeline for inspections, maintenance, testing and in an emergency.

The ROW can exist in many kinds of ecosystems, such as river crossings, cultivated fields and urban areas; as such, there is no distinct look to the ROW.

Pipeline markers are signs that indicate that a pipeline is in the area. While these signs are located at roads, railways, water crossings and varying intervals along the ROW, they indicate only the approximate location of the buried pipeline and should never be used as a reference for the exact location. These signs also provide you with important information such as the pipeline owner, the type of product being carried, a reminder to Call or Click Before You Dig, and an emergency number for reporting pipeline emergencies.

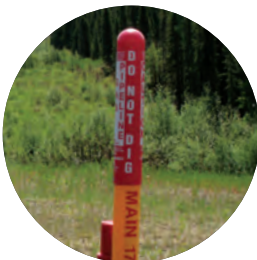
The depth and actual location of the pipeline may vary across Alliance's system. As such, only an Alliance representative can accurately determine the location and depth of our pipeline. That's why it's

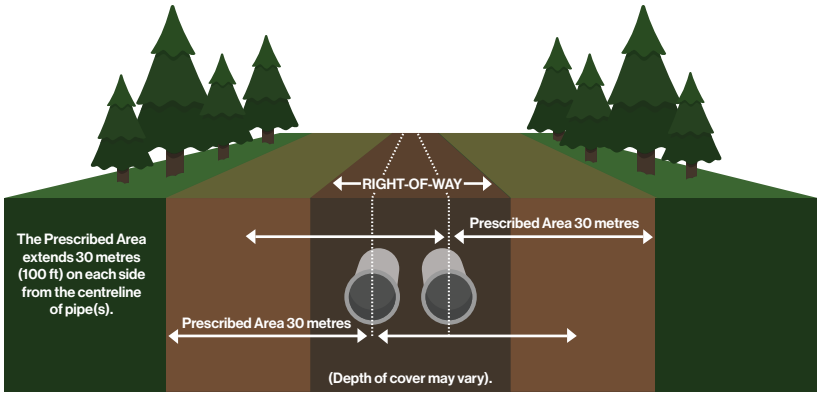
important to remind all permit applicants and developers to always call the local one-call centre at least three days in advance of any planned ground disturbance activity. If underground utilities do exist, they will be located and identified using temporary colour-coded markings.

For planning and development purposes, it's important to make applicants aware that:

- Permanent structures are prohibited within the pipeline ROW.
- Landscaping and temporary structures within the pipeline ROW require review, assessment and written consent.
- Written consent is required to operate vehicles or mobile equipment across a pipeline (outside the travelled portion of a highway or public road).
- Written consent is required before conducting ground disturbance activity or construction along, across or under a pipeline.
- Call or Click Before You Dig (a one-call centre) must be contacted before conducting any ground disturbance activity or construction on, along, across, or under a pipeline.
- A location other than the pipeline ROW is chosen as the muster point or meeting place when developing emergency plans for a project.
- Positive identification is required (using hand exposure or vacuum excavation) before machine excavation within five metres of the pipeline.
- Alliance must be notified, at least one full working day, before backfilling over any exposed pipe. An Alliance representative must be on site before backfilling.
- Any exposed pipe must be immediately reported to Alliance using the 24-hour emergency number.

For more information, contact us at crossings@alliancepipeline.com.





> Alliance’s cross-border and interprovincial pipeline is regulated by the Canada Energy Regulator (CER) (formerly the National Energy Board (NEB)) and must comply with specific pipeline standards and regulations. In addition to the ROW, where the pipeline is located, the CER has established a 30 metre (100 foot) prescribed area on either side of the pipeline—measured perpendicularly from the centreline of the pipe—to protect the public, the environment and the pipeline. **If planning to conduct any ground disturbance in this area, written consent from Alliance is first required.**

Canada Energy Regulator requirements

Under the Canadian Energy Regulator Act (CER Act), the responsibility to prevent pipeline damage is shared between anyone who plans to conduct an activity near a pipeline and the pipeline company. Activities near our pipeline is prohibited unless authorized through the *National Energy Board Damage Prevention Regulations— Authorizations and Damage Prevention Regulations—Obligations of Pipeline Companies* (together, the DPRs). The DPRs apply to any person or company planning or undertaking an activity near a CER-regulated pipeline.

Activities in the Prescribed Area

The DPRs require that within this area activities causing, or that might cause, a ground disturbance cannot occur without written consent from the pipeline company. If consent is granted, a locate request must be made to confirm the location of the pipeline and any other underground utilities. All planned construction activities on, along, under or across the pipeline must also receive approval from Alliance, and a locate request, before going ahead.

It’s important to make permit applicants and developers aware that if they will be undertaking any of the activities listed

below, they should be sure to plan ahead, as approvals for some facilities may take longer than others.

This includes contacting us in advance to:

- Conduct a ground disturbance as defined above.
- Construct roads, paving, parking areas, driveways, ditches, railways, overhead or underground facilities.
- Install services.
- Build a berm.
- Drainage improvements.

Ground disturbance

A ground disturbance is any work, operation or activity that results in the disturbance of the earth.

Permit applicants and developers should be made aware that if they plan to carry out any ground disturbance activities within the prescribed area, they must:

- 1 Contact Alliance to obtain written consent to conduct the activity.
- 2 If written consent is given, they must contact their local one-call centre to make a locate request.

Locate requests must be made at least three working days before the day on which the construction or planned ground disturbance activity is to start.

Activities causing ground disturbance can include, but are not limited to, the following:

- Installing/constructing a fence, shed or retaining wall.
- Installing facilities on, along, under or across the pipeline.
- Landscaping, tree planting, clearing and removing stumps.
- Constructing roads, paving, parking areas, driveways, ditches.
- Excavating, digging, trenching or ditching.
- Driving sign posts, bars, rods, pins, anchors or pilings.
- Stockpiling materials.
- Land leveling, topsoil stripping, subsoiling and grading.
- Cultivation exceeding 45 centimetres (18 inches) in depth.
- Quarrying or blasting/using explosives, seismic explorations.
- Drainage or irrigation systems, including dykes, ditches and culverts.

Call or Click Before You Dig

We know that sometimes work needs to be done on or near the pipeline. That's why we are a member of Call or Click Before You Dig, a **free** communication service that notifies member companies of proposed activities so that underground infrastructure can be safely marked with flags, stakes or paint before work begins.

Please make permit applicants and developers aware that to make a locate request, they are to visit ClickBeforeYouDig.com, or call the local one-call number for their area, at least three working days in advance of any planned ground disturbance or construction activity. The one-call centre will then notify an Alliance representative who will come to the job site ready to mark the locations of any pipeline(s). Call or Click Before You Dig is a free service that can prevent delays, accidents, injuries or deaths.



APWA (American Public Works Association) Uniform Color Code

-  **White** – Proposed Excavation
-  **Pink** – Temporary Survey Markings
-  **Red** – Electric Power Lines, Cables, Conduit and Lighting Cables
-  **Yellow** – Gas, Oil, Petroleum or Gaseous Materials
-  **Orange** – Communication, Alarm or Signal Lines, Cables or Conduit
-  **Blue** – Potable Water
-  **Purple** – Reclaimed Water, Irrigation and Slurry Lines
-  **Green** – Sewer and Drain Lines

Mobile equipment and vehicle crossings

Federal regulations also require that any persons wanting to operate vehicles or mobile equipment across a pipeline (outside the travelled portion of a highway or public road) must have the pipeline company's written consent before doing so.

Please advise permit applicants and developers that they need to apply to Alliance for a crossing request before any vehicle or mobile equipment crosses our pipeline. We will assess the request and if approved, provide written consent including mitigation measures.

Crossing and ground disturbance activities are not to proceed until the locating and marking of the pipeline, and any required mitigating measures are in place.

Crossing for agricultural activity

The DPRs define agricultural activity as:

- The production of crops and the raising of animals and includes pasturing.
- Cultivation activities such as tillage, plowing, disking and harrowing.

For the purpose of these activities, the DPRs authorize persons operating agricultural vehicles or mobile equipment to cross the pipeline under certain conditions:

- 1 The loaded axle weight and tire pressures of the vehicle or mobile equipment are within the manufacturer's approved limits and operating guidelines.
- 2 The point of crossing has not been the subject of a notification from the pipeline company that crossing at that location could impair the pipeline's safety or security.

For any questions, please direct permit applicants to contact Alliance at crossings@alliancepipeline.com.

Written permission

Written permission is also required prior to doing any work or vehicle crossing within the Alliance ROW.

As part of our review and assessment process for written consent, we require that permit applicants and developers provide us with scope of work, appropriate plans, schedule and equipment lists. When this information is provided in a timely manner, we are better able to help applicants and developers avoid unnecessary and costly delays.

If scope of work changes, applicants and developers must contact Alliance again.

This includes, but is not limited to: changes to scope of work, location, schedule, method of installation, and equipment to be used. Alliance will work with applicants and developers to issue a revised consent.

Unauthorized activity and AMPs

Certain contraventions of the CER Act and its associated regulations, such as the DPRs, must be reported by the pipeline company to the CER. Such contraventions can result in the CER imposing financial penalties called Administrative Monetary Penalties (AMPs) on companies or individuals when enforcement tools such as letters, orders or voluntary commitments are not working to prevent unauthorized activity within the prescribed area. The CER Act sets the maximum daily fines of up to \$25,000 for individuals and \$100,000 for companies per violation.

We invite you to share information about the DPRs and AMPs with permit applicants and land developers. It's important that these regulations are understood prior to planning work in proximity to CER-regulated pipelines. More information can be found on the CER website at cer-rec.gc.ca.



As our communities continue to grow, it's important that Alliance maintains ongoing consultation with public officials, community leaders, developers, landowners and industry, for any proposed development projects in proximity to our pipeline system.

Land use planning

Industrial, residential and commercial development that encroaches on the pipeline ROW can present safety and operational risks to those working and living nearby. That's why it's important to consult us early in the planning stage of a project on or near our assets. This allows affected parties to better incorporate existing pipeline(s) and facilities into the plan, making sure that new development meets both regulatory and Alliance's requirements, while also maintaining high standards for public safety.

Significant population and infrastructure growth, without Alliance's knowledge, has the potential to impact the operational requirements of our existing pipeline, such as changes to operating pressure,

revisions to our emergency response plans, increased public awareness outreach and other actions as necessary.

As such, we ask that public officials, community leaders, developers and industry consult with Alliance, early and often, before any development within our emergency planning zone (EPZ) buffers. This helps avoid issues by allowing us to assess potential impacts and recommend possible measures for protection.

Land development decisions in the vicinity of our pipeline should be based on risk-informed decisions.

Below are some questions to be asked prior to considering land use development:

- Have you checked your proposed development area for the presence of the pipeline or other underground utilities?
- Are there any pipeline markers or warning signs in the area?
- Have you contacted your local one-call centre to determine if there are any buried facilities that may affect your project planning?
- Have you obtained the necessary written permissions from Alliance and other facility owners?

- Have you, working with the utility operator, considered the need for right-of-way access?
- Have you considered evacuation routes to be used in the event of an emergency?
- How will you prevent damage to buried utilities during construction?
- Does the utility operator agree with your development proposal?

Consult with Alliance early on and we will work with you to avoid problems or costly delays.

Remember, written permission from Alliance is required prior to all of the following activities:

- **Ground disturbance activity within 30 metres of the pipeline centreline (the prescribed area).**
- **Ground disturbance within the ROW.**
- **Construction or installation of a facility on, along, under or across a pipeline, including the ROW.**
- **Vehicle or mobile equipment on the pipeline ROW or when crossing the pipeline ROW (outside the travelled portion of a highway or public road).**

For guidelines for crossings and temporary applications, please email us at crossings@alliancepipeline.com.

Report emergencies

Any contact with the pipe or its coating must immediately be reported to Alliance at **1-800-884-8811**.

It is important that you know the warning signs and how to respond in the event of an emergency. Please refer to the *Emergency Information* section of this guide to read about what to do in the event of an emergency.

Safety checklist

All permit applicants planning to construct a facility or conduct a ground disturbance activity near a pipeline are to follow this safety check list:

- 1 Plan your activity.** Identify the location of your work, making sure to look for pipeline marker posts, warning signs or other buried facilities.
- 2 Contact Alliance to obtain written consent.** Contact us to obtain our guidelines for constructing a facility, conducting a ground disturbance activity or vehicle crossing near the pipeline. Remember, written consent is required for the construction of facilities across, on, along or under a pipeline; conducting ground disturbance activities within the prescribed area, and crossing a pipeline with a vehicle or mobile equipment across the ROW (where no highway or public road exists).
- 3 Make a locate request.** At least three working days before the planned activity is to start, contact clickbeforeyoudig.com or call your local one-call centre.
- 4 Be on site** when underground facilities are being located to be sure you understand the meaning of the markings.
- 5 Review CER requirements.** Confirm that any persons or companies hired to do work on your behalf, such as contractors, are aware of the necessary obligations.
- 6 Follow all instructions** provided in the authorization, including hand exposing or vacuum excavating the pipe before mechanical excavations within five meters of the pipe and notifying Alliance prior to backfilling. An Alliance representative must be on site during backfill.
- 7 Immediately notify Alliance if you come into contact with the pipe or its coating.** Immediately call our 24-hour emergency line at **1-800-884-8811**.

Protecting the air, water and land in your community is an important part of our job.

In an emergency

Pipelines have been proven as the safest transportation mode for energy commodities. Pipeline leaks are rare but can happen for a number of different reasons. Studies show that third-party damage is one of the most common reasons for pipeline leaks or ruptures, which underscores the importance of Call or Click Before You Dig programs.

Internal inspection tools are used to detect potential problems with the pipeline which enables Alliance to perform investigative digs and repair any anomalies. Since some commodities are more flammable than others, a pipeline leak or rupture will have different consequences depending on the commodity being transported.

Hydrocarbon products such as natural gas and natural gas liquids are very flammable, and can catch fire from even the smallest spark or ignition source. The products in Alliance's system are flammable, and are potentially hazardous and explosive under certain conditions.

Given our thorough maintenance, testing, training, monitoring and safety programs, a pipeline leak is unlikely; however, if one were to occur, it's important that you know and share the warning signs and how to respond in the event of an emergency or if you suspect pipeline operations have been disrupted in any way.

Know the warning signs

Natural gas is lighter than air, so if there were a release along our pipeline, most of the product would dissipate into the atmosphere. Even so, you should avoid contact with any product released from a pipeline.

Natural gas poses some health hazards and could cause dizziness, shortness of breath and loss of consciousness, if inhaled. It is flammable, so be sure to eliminate any potential sources of ignition if you suspect a natural gas leak.



You might see:

- A steam-like cloud.
- Unexpected frost build up on the ground.
- Dirt or dust being blown from the ground or appearing to be thrown into the air.
- Bubbling in wet areas or blowing into the air at a pond, creek or river.
- Dead or dying vegetation on or near a pipeline in an otherwise green area.



You might hear:

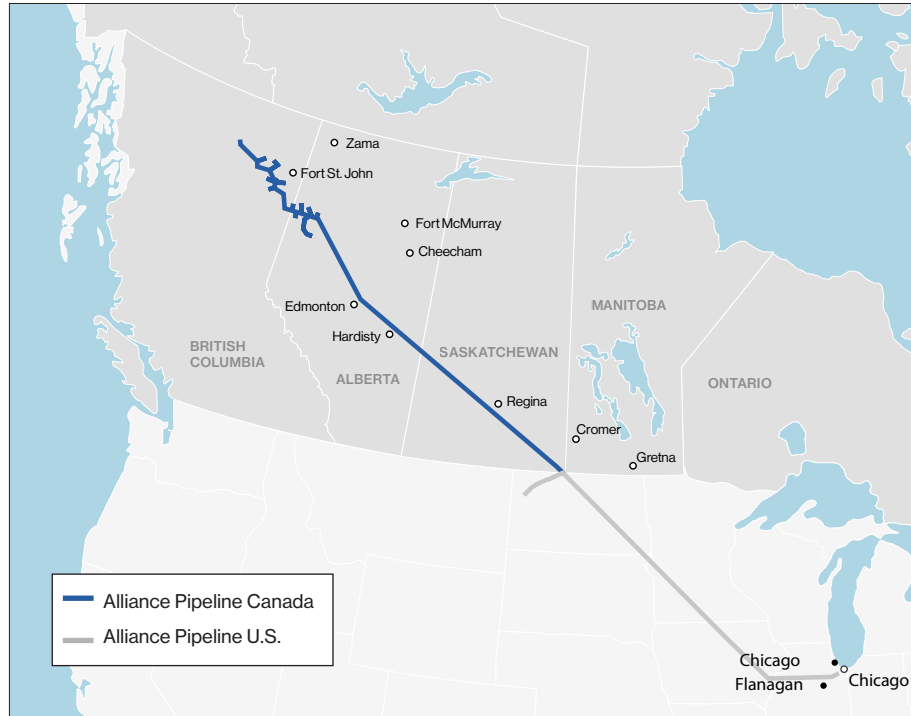
- An unusual roaring, blowing or hissing or loud whistling sound.



You might smell:

- No odour or a smell similar to diesel, oil or propane.

Unlike the natural gas delivered to your home which may be odourized, the natural gas in Alliance's pipeline is not odourized. While you may notice a slight smell, similar to diesel fuel, oil or propane, you will not smell the common rotten egg odour associated with natural gas.



The Alliance Pipeline system consists of a 3,848-kilometre integrated Canadian and U.S. natural gas gathering and transmission system, from northeastern British Columbia and northwestern Alberta, through Saskatchewan, North Dakota, Minnesota and Iowa and ending in Illinois.

The Canadian portion of the pipeline consists of approximately 2,292 kilometres of infrastructure.

Delivering an average of 1.6 billion cubic feet of natural gas every day, safety is at the core of everything we do, but we know we can't do it alone.

For us, preparedness means developing integrated response plans based on open communication and teamwork. We work year-round with local fire and police services so that they have the information they require to respond to an emergency, and we regularly communicate important information to local governments, community fire and police services, utilities, contractors, residents, business owners, neighbours and tenants, and community leaders like you.



What to do in an emergency

- If you can do so safely, turn off any ignition sources. Move as far away from the leak as possible in an upwind direction, avoiding contact with escaping liquids and gases.
- **Call 911.**
- Call the toll-free, 24-hour Alliance emergency number: **1-800-884-8811.**
- If safe to do so, warn others to stay away.

What NOT to do in an emergency

- Do not touch or go near the leaking gas, liquid or vapour that may have come from the pipeline.
- Do not attempt to extinguish a natural gas fire.
- **Do not attempt to operate pipeline valves.**
- Do not start your vehicle or any other piece of equipment that can act as a possible ignition source.
- Do not light a match or smoke, and avoid heat sources or making sparks that could ignite the leaking gas as you are leaving the area.
- Do not turn on or off anything that may create a spark—including cell phones, telephones, light switches, vehicle alarms, vehicle keyless entry and flashlights—until you are in a safe location.

We appreciate your calls, any time of the year, any time of day. This page contains important phone numbers you can use to contact an Alliance representative with any comments or questions.

In case of an emergency, please find a safe place to **call 911** and then call the toll-free 24-hour Alliance emergency number:

1-800-884-8811

For questions regarding Alliance's general operations or for planning construction, fencing, digging or explosives use, please call collect the number for your area:

British Columbia, Alberta & Saskatchewan
crossings@alliancepipeline.com

More information can also be found at: **enbridge.com/damageprevention**

Call or Click Before You Dig

Any person who intends to construct a facility across, on, along or under a pipeline, operate a motorized vehicle or engage in activity that would cause a ground disturbance within the prescribed area, must make a locate request at least three working days before the day on which the construction or activity is to start.

Please visit **ClickBeforeYouDig.com** or contact your local one-call centre:

- BC 1 Call
1-800-474-6886
- Alberta One-Call
1-800-242-3447
- Sask 1st Call
1-866-828-4888



Links for more information

Canadian Common Ground Alliance
canadiancga.com

BC Common Ground Alliance
commongroundbc.ca

Alberta Common Ground Alliance
albertaga.ca

Saskatchewan Common Ground Alliance
scga.ca

Alliance Pipeline
alliancepipeline.com